



SILENT BREAKING HAMMER

SUNWARD

SUNWARD INTELLIGENT EQUIPMENT CO.,LTD.

✉ sales@sunward.com.cn

📍 Sunward Industrial Park, No. 1335 Liangtang Road(E), Xingsha, Changsha, Hunan, China

☎ Sunward Industrial Park, No. 1335 Liangtang Road(E), Xingsha, Changsha, Hunan, China

🌐 www.sunward.com.cn



The official Wechat

The official website

Be sure to read the operation and maintenance manual carefully when using the equipment. Sunward follows the principle of continuous improvement, and it may be difficult to notify you of some improvements to the product. This sample is for reference only, and the final interpretation right belongs to Sunward.

Internal information, please do not share.

ABOUT SUNWARD

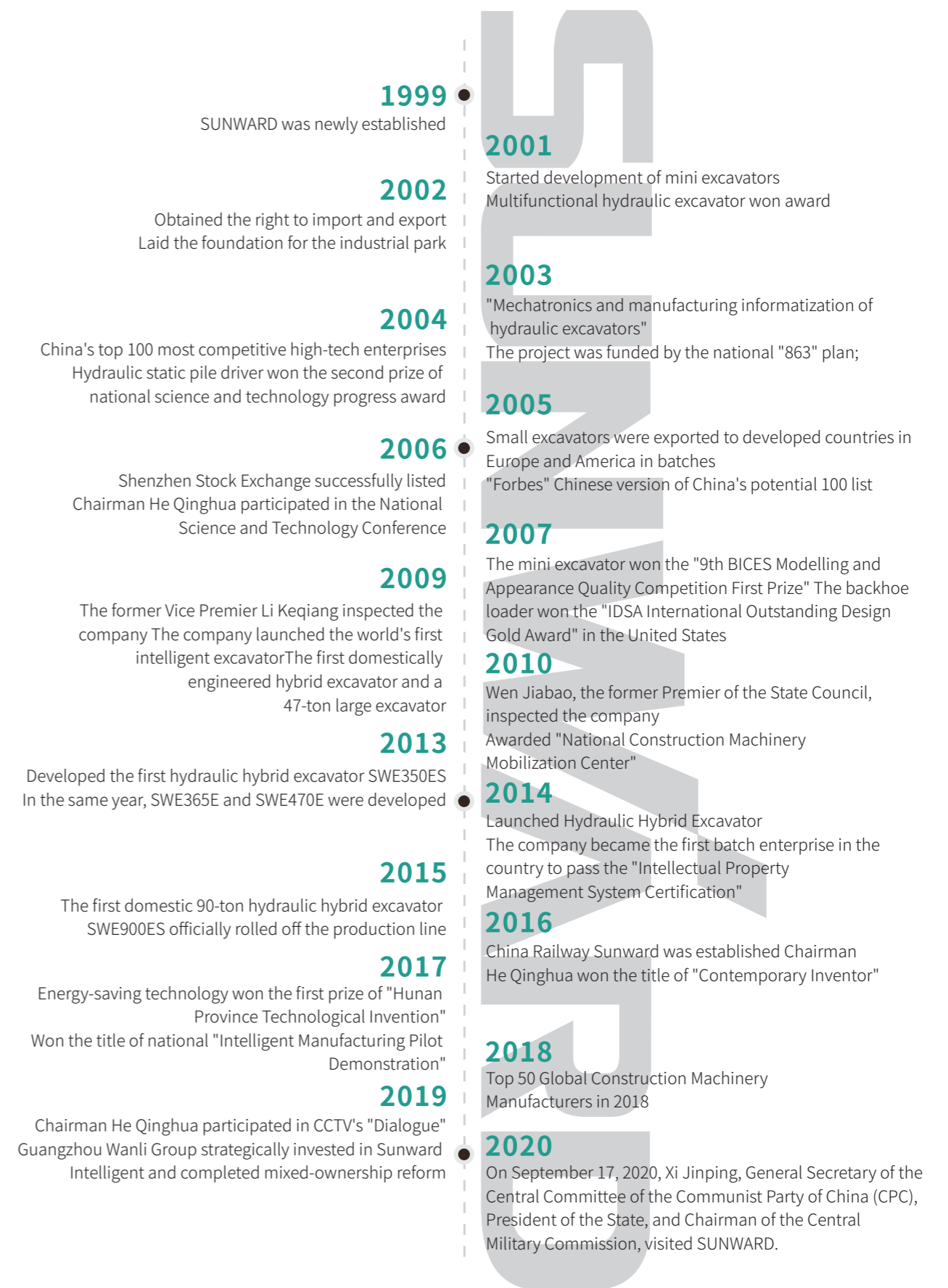
Sunward Intelligent Equipment Co., Ltd. was founded in 1999 under the leadership of Professor He Qinghua from Central South University, relying on revolutionary innovative products - hydraulic static pile driver to start. It has now developed into a listed company Sunward Intelligent Equipment Co., Ltd. as its core, Changsha as its headquarters, a certain influential international enterprise group.

SUNWARD takes "to be the creator of world value in the field of equipment manufacturing" as its mission and vision. Focusing on equipment manufacturing, the three lines of engineering equipment, special equipment, and aviation equipment develop simultaneously. The company's total assets are 19 billion yuan, now it is one of the leading underground engineering equipment enterprises in China. It is also listed in "Top 50 Global Construction Machinery Manufacturers", "Top 3 Global Regional Aircraft Leasing Enterprises"

SUNWARD has successfully developed more than 200 high-end equipment products with independent intellectual property rights and core competitiveness in more than ten fields (including underground engineering equipment, whole series of excavators, modern rock drilling equipment, special equipment, mining equipment, hoisting machinery, hydraulic components and general aviation equipment), and exported them to more than 100 countries and regions around the world. The trademark "SUNWARD" has been registered in dozens of countries.

SUNWARD has possessed more than 1,000 patented technologies and undertaken 30 national projects such as the National "863" Program, National Sci-Tech Support Plan, and Project to Strengthen Development at the Grass-roots Level. It has won dozens of awards, including the second prize of National Science and Technology Progress. It has been awarded or approved to set up honorary titles or innovation platforms such as "National Technology Innovation Demonstration Enterprise" and "National Innovative Enterprise".

On September 17, 2020, Xi Jinping, General Secretary of the Central Committee of the Communist Party of China (CPC), President of the State, and Chairman of the Central Military Commission, visited SUNWARD and said: "I am deeply impressed by your innovative spirit. Innovation is the most important quality of enterprise management, and it is also what we must do to climb the hurdle in the future. The key core technologies must be firmly in our own hands, and the manufacturing industry must also be in our own hands."



Silent Type Hydraulic Breaking Hammer Application



SILENT TYPE HYDRAULIC BREAKING HAMMER APPLICATION

Mine

mining
secondary breaking
grizzly breaking

Metallurgy

slag cleaning
furnace dismantling
foundation demolition

Highway

pavement crushing
foundation excavation
roadbed compaction

Railway

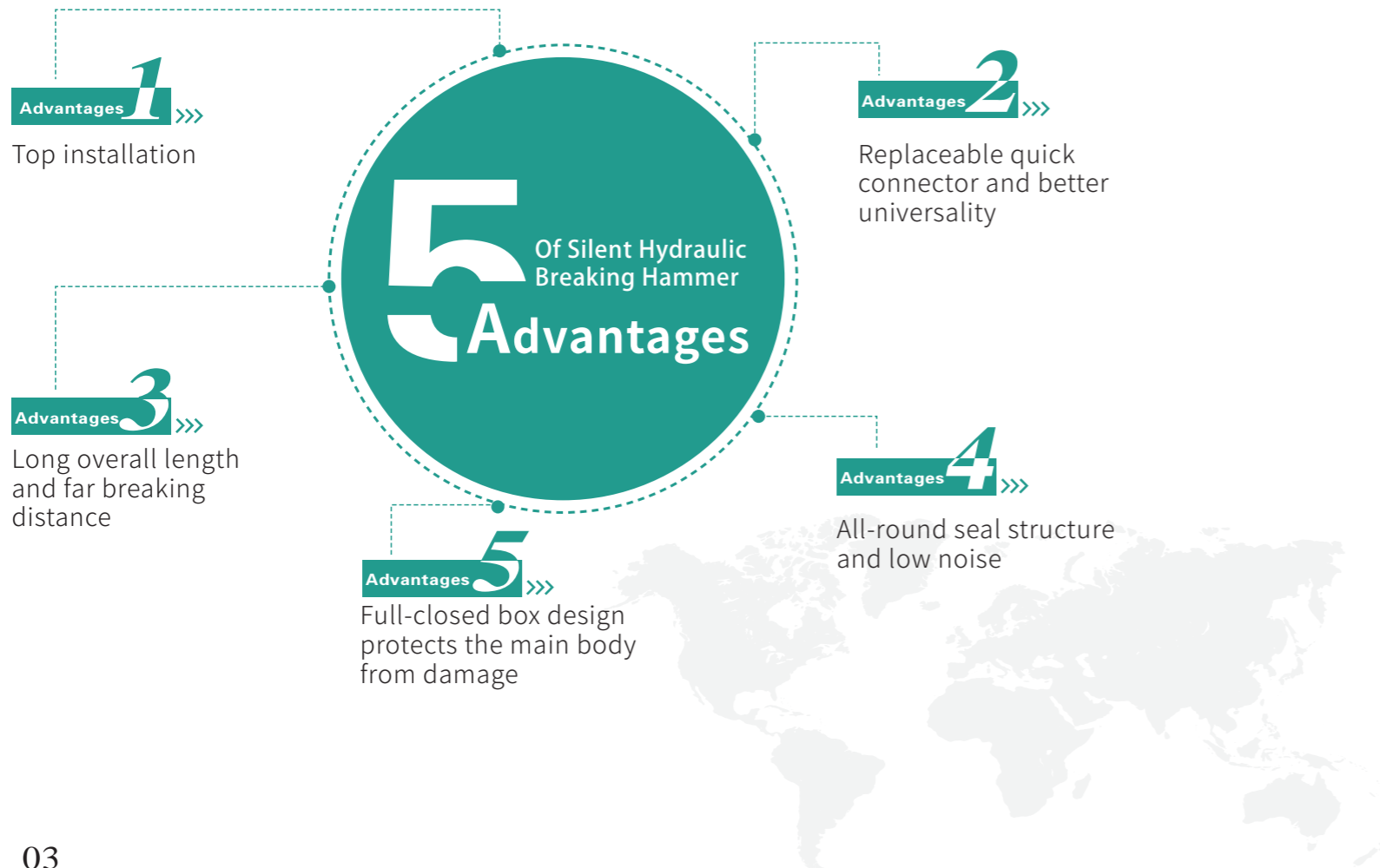
mountain excavation
break road and bridge
roadbed compaction

Construction

Building demolition
foundation compaction

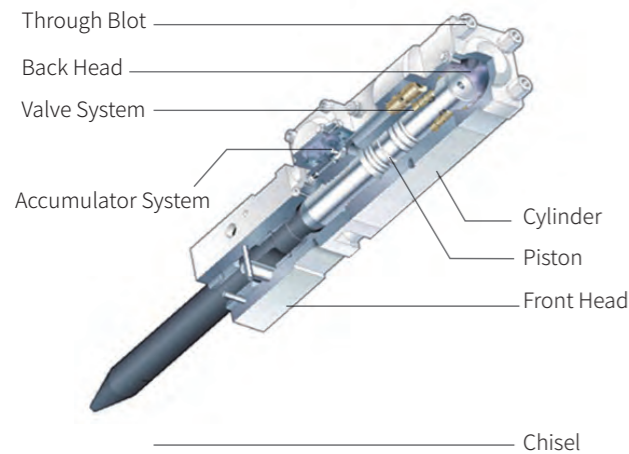
Others

break ice and soil
sand vibrating
hull cleaning



Silent Type Hydraulic Breaking Hammer

STRUCTURE AND CHISEL TYPES



- Valve**
 Built in the valve housing to control piston movement
- Piston**
 The power making parts of the breaker
- Back Head**
 Nitrogen storage room
- Cylinder**
 The core of the breaker and the working device of the breaker
- Front Head**
 The chisel's support device
- Chisel**
 The breaking parts

- Moil Point**
 Moil point goes through quickly. Used for breaking oversize objects and concrete.
- Flat Wedge**
 Used for special breaking work, during which accurate breaking is not required.
- Blunt**
 Used for most demolition work.

The head shape and length of the chisel can be customized according to customer's needs. The head bshape can be moil point, flat wedge and blunt.

TECHNICAL PARAMETERS OF SILENT HYDRAULIC BREAKING HAMMER



Item		Net Weight	Diameter of drill rod	Working pressure	Flow capacity	Strike frequency	Pressure in nitrogen chamber	Adaptive Sunward Excavator
Code	Specs	kg	mm	kg/cm ²	U/min	bpm	kg/cm ²	Machine model
739900000674	SWBG040H	115	40	90-120	15-25	800-1400	15-16.5	SWE08B
739900000795	SWBG045H-1	145	45	90-120	20-30	700-1200	15-16.5	SWE17F/18UF/20F
739900000675	SWBG045H	145	45	90-120	20-30	700-1200	15-16.5	SWE25UF/25F
739900000676	SWBG053H	172	53	90-120	25-50	600-1100	15-16.5	SWE35UF
739900000677	SWBG068H	339	68	110-140	40-70	500-900	15-16.5	SWE60UF
739900000656	SWBH085H	640	85	130-160	60-100	400-800	15-16.5	SWE90UF
739900000659	SWBH100H	842	100	150-170	80-110	350-700	15-16.5	SWE155F
739900000662	SWBH135H	1520	135	150-170	120-160	350-500	16.5-18	SWE215F